



THE UNIVERSITY
of ADELAIDE

150 YEARS

2025

Medicine Admissions Guide

Domestic applicants



GROUP
OF EIGHT
AUSTRALIA

make
history.

Contents

Adelaide Medical School / 01

Bachelor of Medical Studies and Doctor of Medicine / 02

Are you a domestic or international applicant? / 03

Domestic entry overview / 04

Step 1. Prerequisite subjects / 04

Step 2. Academic score / 04

Step 3. UCAT ANZ registration / 04

Step 4. Sit the UCAT ANZ / 05

Step 5. SATAC application / 05

Step 6. Interview eligibility outcome / 06

Step 7. Interview / 06

Step 8. Offers / 07

Eligibility for entry pathways / 08

Entry pathways / 09

Aboriginal and Torres Strait Islander applicants / 09

Higher Education applicants / 10

Rural Background applicants / 10

Secondary School Leaver applicants / 10

Domestic entry key dates / 11

Domestic contacts / 11

Alternative study / 12



Adelaide Medical School

The high-level medical knowledge and clinical skills you need; the advanced research and future-savvy capabilities industry demands. Your path to becoming a practising doctor, and future healthcare leader, starts here—in South Australia's most complete and globally recognised health education environment.

Graduate at the masters level, with the world at your feet

Introduced in 2022, the two sequential degrees, the Bachelor of Medical Studies and Doctor of Medicine (also known as the Adelaide medical program) have replaced the previous Bachelor Medicine and Bachelor of Surgery (MBBS). This has lifted our already world top-100 ranked medicine training even higher. You'll graduate with an Australian Qualifications Framework (AQF) level 7 qualification and a masters-level AQF 9.

In the Adelaide medical program you will:

- learn in partnership with clinicians and health professional educators
- learn in state-of-the-art facilities, Adelaide Health Simulation, including the new immersion lab which utilises 360° technology
- learn from curriculum based on real-world scenarios and global perspectives
- be work-ready by the end of the six-year degree, with all competencies required by the Australian Medical Council (AMC) completed
- develop research skills with all students undertaking a substantial research project.

Key features of the Adelaide medical program

- six year medical degree
- to progress to the Doctor of Medicine, you will need to successfully complete the Bachelor of Medical Studies
- the program focuses on learning in the following domains: science and scholarship, clinical practice, health and society, and professionalism and leadership
- emphasis is placed on developing and applying research skills. You will undertake a research project in Year 6 of the program.
- students will have the opportunity to complete a year-long course in the rural setting in Year 5
- clinical placements will occur in a variety of settings
- simulation of clinical scenarios will play a key part of your learning
- you will be required to attend lectures, workshops, tutorials, practical sessions and placements
- you will learn alongside students from other disciplines, such as nursing, in specific interprofessional learning activities.

Emerge ready to formulate, communicate and deliver medical care

Upon graduation you'll have the qualifications, confidence and capability to enhance health and wellbeing as a doctor anywhere in Australia, and throughout most of the world.

Inherent requirements

Inherent requirements are the fundamental aspects of a degree that must be met by all students. They are the abilities, knowledge and skills students need to complete the degree.



Students with a disability or chronic health condition may have adjustments made to enable them to meet these requirements. All students must fulfil the inherent requirements of the Bachelor of Medical Studies / Doctor of Medicine they are undertaking. While reasonable adjustments can be made, these adjustments cannot compromise academic integrity.

Clinical placements require significant time commitments from students, which may include time periods normally regarded as 'after hours'. Students will need physical and mental stamina, as well as flexibility with respect to hours of attendance. Placements are undertaken at a range of locations around South Australia, some of which will be rural and/or remote areas.

For more details, visit: health.adelaide.edu.au/study-with-us/inherent-requirements/medicine.

Incidental fees

There will be additional costs, over and above tuition fees for all Bachelor of Medical Studies and Doctor of Medicine students, this includes (but is not limited to) textbooks, equipment, required immunisations, clearance renewals, first aid certificates, student amenities fees etc.

For further information visit: adelaide.edu.au/student/finance/other-fees

Bachelor of Medical Studies and Doctor of Medicine

SATAC code

354552: non-bonded medical program
354553: bonded medical program

Duration 6 years full-time

Location North Terrace campus

Mid-year entry No

Places available in 2025

The Bachelor of Medical Studies and Doctor of Medicine degree has 134 domestic places for our annual intake. Strict quotas apply to the Adelaide medical program that factor 28.5% of the overall domestic places being allocated a Bonded Medical Program Place (BMP).

Medicine clinical placement requirements

Clinical placements are compulsory and students undertaking clinical placements in medicine must satisfy a number of requirements. You will learn more about the requirements for clinical placement during orientation.

For more details, visit: health.adelaide.edu.au/student-support/clinical-placements

Rural placements

Enrolment in the University of Adelaide's Bachelor of Medical Studies and Doctor of Medicine requires students to undertake rural clinical placements. Commonwealth supported students (in both bonded and non-bonded places) need to complete four weeks of rural placements before graduation, with 30% of students required to complete one year of clinical training in a rural site. If these places are not filled by students voluntarily, all students in Commonwealth supported places will be included in a random ballot to be allocated to one of these year-long rural placements.

Graduate registration

After successful completion of the Adelaide medical program, graduates are eligible to register with the Medical Board of Australia. In order to register, applicants must be able to demonstrate English language skills at IELTS academic level 7 or the equivalent.

New Zealand citizens applying to the Adelaide medical program intending to practise in Australia after graduation must be aware of the criteria for obtaining a Medicare Provider Number.

Refer to [medicareaustralia.gov.au](https://www.medicareaustralia.gov.au)

International applicants should note that successful completion of this degree may not qualify them to practise/register in their home country. Applicants will have to contact the relevant health registration bodies of their home country for further information.

Career opportunities

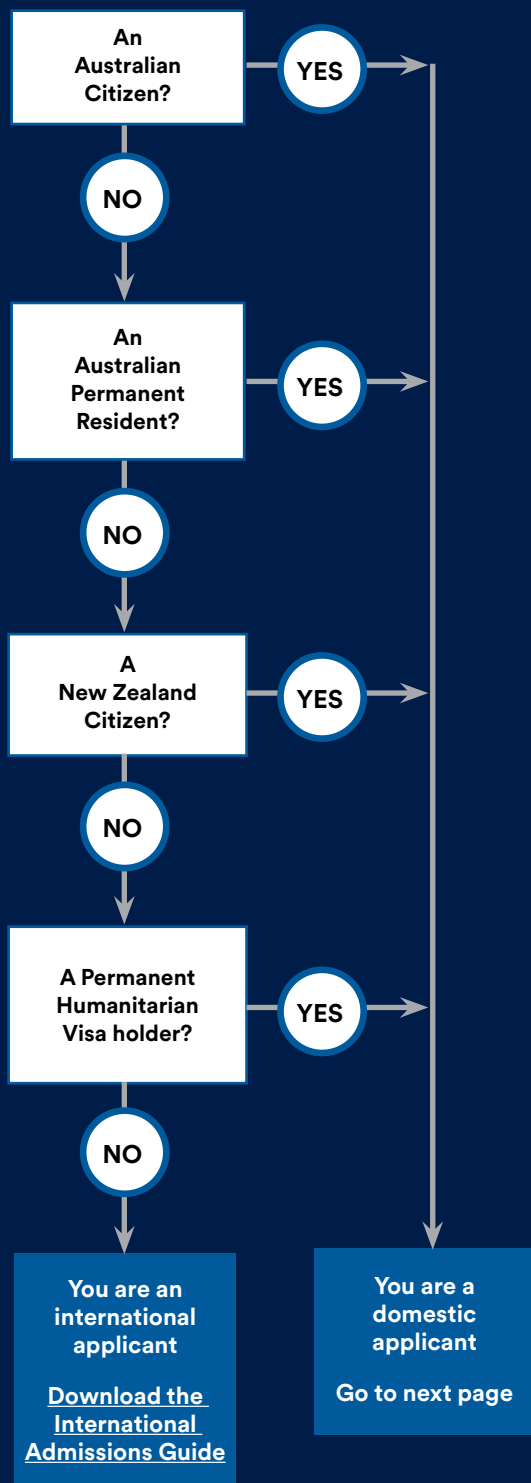
After graduation, and before being admitted to full registration as a medical practitioner in Australia, graduates must serve at least 12 months as an intern in an approved hospital. After successfully completing the internship and obtaining full registration to practise, students will need to make a career decision about entering a training program offered by a professional college. A wide range of opportunities are available, and students may choose to pursue a career in areas such as general practice, surgery, medicine or public health. They may choose to work in a rural area of Australia, or, as a university clinical academic, they may choose to combine clinical practice with research and education.

Medicine graduates from the University of Adelaide are now working in a diverse range of fields or have begun additional study in specialisations such as psychiatry, ophthalmology or paediatrics. Potential career paths will become apparent as students progress through the degree.



Are you a domestic or international applicant?

Are you:



Immigration status

Change in immigration status during the application process

- If you are an international applicant to the Adelaide medical program and your residency status changes during the application process (i.e. you obtain permanent residency or some other immigration status that entitles you to the educational benefits of permanent residency), you will no longer be eligible for an international student place.
- If you are an international student and your immigration status changes prior to 30 September and you have NOT lodged a parallel domestic application and/or you do not meet the additional entry requirements for domestic applicants, you cannot be considered for a domestic offer and can no longer be considered for an international offer. You will need to re-apply for domestic entry the following year, in accordance with the entry policy of that year.
- If you are an international student and your immigration status changes after 30 September and prior to the release of international offers, you will no longer be considered for the international cohort. You will need to re-apply for domestic entry the following year, in accordance with the entry policy of that year.

Change in immigration status prior to release of offers

- Offers for international places in the Adelaide medical program cannot be made to applicants who are Australian/New Zealand citizens or Australian Permanent Residents.
- If you obtain permanent residency (or some other immigration status that entitles you to the educational benefits of permanent residency) after 30 September and prior to the release of international offers, you will not be eligible for an international offer and you will need to re-apply for domestic entry the following year, in accordance with the entry policy of that year.

Change in immigration status after accepting an offer

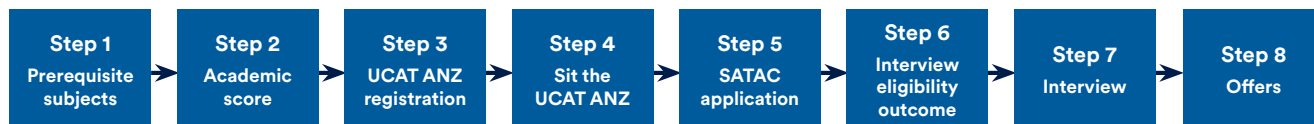
- Due to strict domestic and international quotas for commencing students, if you obtain permanent residency (or some other immigration status that entitles you to the educational benefits of permanent residency) after you accept your offer and before you complete your first year of study in the Adelaide medical program, you will not be able to remain in the degree.

Change in immigration status during studies

- If you are an international student and you obtain permanent residency (or another applicable immigration status that entitles you to the educational benefits of permanent residency) after you complete your first year of study, you will only be able to remain in the Adelaide medical program if there is a domestic place available at that time. With strict quotas across the breadth of the Adelaide medical program, availabilities of domestic places at any given time cannot be guaranteed. These are at the discretion of the Executive Dean and subject to availability.
- If a domestic place is available, you must pay tuition fees for the remainder of your studies in the degree (i.e. you cannot be transferred to a Commonwealth supported place). If a domestic place is not available, you will not be able to remain in the Adelaide medical program.

Domestic entry overview

Application process



Step 1. Prerequisite subjects

You must have successfully completed one of the prerequisite subjects. This can be done through, but not limited to SACE Stage 2, International Baccalaureate (IB) or tertiary studies.

SACE Stage 2

One subject chosen from:

- Biology
- Chemistry
- Mathematical Methods

International Baccalaureate (IB)

One subject (SL grade 4/ HL grade 3) in International Baccalaureate (IB) or the interstate/overseas equivalent from the above SACE Stage 2 subject list.

University of Adelaide tertiary study examples:

- Human Anatomy and Physiology 1A and 1B
- Foundations of Chemistry 1A and 1B

To query equivalent subjects please contact start@adelaide.edu.au

Assumed knowledge

High proficiency in written and spoken English.

Step 2. Academic score

To meet the minimum academic threshold for entry into the Bachelor of Medical Studies and Doctor of Medicine degree at the University of Adelaide, you must achieve:

- Australian Tertiary Admissions Rank (ATAR) including any applicable adjustment factors: 90 or above
- the equivalent International Baccalaureate (IB) score* or the interstate/overseas equivalent
- Grade Point Average (GPA): 5.0 or above – only applicable for University of Adelaide Higher Education applicants
- STAT Entry: future.ask.adelaide.edu.au/app/answers/detail/a_id/2269/kw/STAT

Please note: *The minimum ATAR to be eligible for entry is 90 but usually a significantly higher ATAR is required due to the competitiveness of applicants. The SACE Board of SA or interstate equivalent will advise the applicant of their ATAR. The University does not release ATAR cut-off scores from previous years.*

**IB equivalencies are reviewed in May and are subject to change from the date of publishing.*

Adjustment factors

The Adelaide medical program does not consider subject adjustment factors and therefore the Universities Language, Literacy and Mathematics Scheme does not apply.

Adjustment factors for the Bachelor of Medical Studies and Doctor of Medicine degree are only available under the Universities Equity Scheme.

For more information, visit adelaide.edu.au/study/undergraduate/how-to-apply-or-change-your-preferences/adjustment-factors or contact start@adelaide.edu.au

Step 3. UCAT ANZ registration

All applicants, with the exception of Aboriginal and Torres Strait Islander pathway applicants (page 9), are required to register and sit for the UCAT ANZ.

The University Clinical Aptitude Test (UCAT ANZ) is an admissions test used by the UCAT ANZ Consortium of universities in Australia and New Zealand for their medical, dental and clinical science degree programs. The UCAT ANZ is a test used widely to help universities select applicants with the most appropriate mental abilities, attitudes, and professional behaviours required for new doctors to be successful in their clinical careers. Details on the test and how to register are available on the UCAT ANZ website ucat.edu.au/ucat-anz

The University of Adelaide does not endorse any commercially available UCAT ANZ preparation courses. You are encouraged to access the practice materials available on the UCAT ANZ website ucat.edu.au/ucat-anz

Step 4. Sit the UCAT ANZ

Once results from the UCAT ANZ are received by the University, we will determine whether or not you receive an invitation to an interview.

If your UCAT ANZ result does not rank you highly enough to receive an invitation to attend an interview, any requests for special consideration for an interview will be declined.

The University of Adelaide will not alter your UCAT ANZ score for any reason, including illness or compassionate grounds, and will not intervene or interfere in the UCAT ANZ scoring process or any application for an alternative test date. The University is not responsible for the release of UCAT ANZ scores to you, and will not comment on the competitiveness of your score.

Can previous UCAT ANZ scores be used?

UCAT ANZ scores can be used for admission to any of the UCAT ANZ Consortium universities only in the year following the test. For example, results from UCAT ANZ 2024 can be used for undergraduate medicine degrees beginning in 2025 but not 2026.

Please note: *The University of Adelaide will not accept UCAT UK results in lieu of the UCAT ANZ. Please refer to the UCAT ANZ FAQ's for further details ucat.edu.au/faqs/*

Step 5. SATAC application

Domestic applicants to the Adelaide medical program apply online through the South Australian Tertiary Admissions Centre (SATAC). Visit: satac.edu.au

SATAC receives and processes applications for all undergraduate degrees in South Australia and releases the formal offers for all University of Adelaide degrees. You will be asked to enter your UCAT ANZ identification number when you lodge your application by the SATAC application deadline listed under Key Dates (page 11).

The email address used for your UCAT must match your SATAC application otherwise your application will not progress further.

Failure to add your correct UCAT ANZ identification number within your application, is not grounds for appeal.

Late applications to the Adelaide medical program will not be considered.

Personal statements, testimonials, character/school/work references, awards, certificates and predicted results do not make up any of the selection components and will not be considered. Please do not submit these documents to the University.

You select your preferred Commonwealth Supported Place type at the time of application to SATAC.

- 354552 Non-bonded medical program

These places have no return of service obligations after graduation.

- 354553 Bonded Medical Program (BMP)

The Australian Government requires 28.5% of the overall CSP places must be allocated as a bonded medical program place (BMP).

For further information on the BMP go to health.gov.au/resources/publications/the-bonded-medical-program

BMP eligibility

The BMP is open to Australian citizens, permanent residents of Australia and New Zealand citizens who held a New Zealand Special Category Visa on or before 26 February 2001.

The University of Adelaide cannot make any assumptions about an applicant's eligibility or willingness to enter into the BMP agreement before making an offer of a bonded medical program place in the Adelaide medical program.

How do I order preferences for bonded and non-bonded medical places?

You can list up to six preferences in your SATAC application. These should be listed in the order you would most like to study, with your highest preference at the top. You are able to list both a non-bonded medical program (354552) and a bonded medical program (354553) in your SATAC application. This will take up two preferences. Visit the SATAC website for further details about applying and preferences: satac.edu.au

For further information about structuring your preferences, visit the Future Student Knowledge Base, My Adelaide, at: future.ask.adelaide.edu.au/app/answers/detail/a_id/2675/kw/bonded



Step 6. Interview eligibility outcome

Your application will be assessed based on your preferences at the closing date of applications. Changes to your preferences after this date will not be considered in assessing your eligibility for interview.

If you have applied for Medicine, Dentistry and/or Oral Health you will be invited to attend one interview which will include all programs. Please ensure you allocate your preferences on SATAC wisely. Eg, if you have no intentions to study Dentistry, please do not preference Medicine and Dentistry.

For all applicants, with the exception of Aboriginal and Torres Strait Islander Pathway applicants, interview eligibility is based on your performance in the UCAT ANZ, with each of sections 1-4 having equal weight. Section 5 of the UCAT ANZ (the Situational Judgment Test component) will only be used to determine eligibility of candidates in the lower rank with equal total score across the other 4 sections.

On Thursday 24 October 2024, you will receive an email from the University of Adelaide to the email address provided in your SATAC application. This email will contain important information on how to log into the Admissions@Adelaide system to see your interview eligibility outcome.

If you are eligible, you will be able to book an interview from a selection of times within the defined interview period on a first come, first served basis. Whilst the booking system is open you can cancel and reschedule your interview by logging back in to Admissions@Adelaide.

Requests for bookings outside of the calendar open times will not be considered. Requests for special consideration of a late booking, due to not finalising your booking or other system issues, outside of the calendar open times will also not be considered.

Please ensure you enter correct details (ie. correct SATAC ID, date of birth etc) when booking your interview.

You should receive a confirmation email from the booking system shortly after booking an interview. If you have not received the confirmation email within 24 hours of booking, or experience any issues with your booking, you must contact us on: uoaapplications@adelaide.edu.au immediately while the calendars are open.

If you are not eligible, your application for 2025 entry will not progress further and we would encourage you to action your back up plans.

Only those who are eligible to book, make an interview booking during the booking period and attend the interview will remain in consideration for an offer into the degree. Interview invitations are based on performance in the UCAT ANZ and do not take into account an applicant's academic record.

Please note: *The University cannot be held responsible if your email set-up filters the University's email into a SPAM, Junk or other such folder – you are advised to check your email settings.*

All notification emails are sent to the email address listed in your SATAC application form. If you unsubscribe from University emails, or your email address is invalid, the University can not be held responsible. Appeals for late bookings will not be considered.

Step 7. Interview

Approximately 600 applicants will be invited to attend an Adelaide medical program interview. There is one round of interviews which will be conducted from late November 2024. A minimum 50% of the school leavers interviewed will be from South Australia.

Please note: *The University reserves the right to run additional interview sessions if necessary.*

All domestic interviews for the 2025 intake will be conducted via video conferencing only. This includes applicants who currently reside in South Australia*. These interviews will be conducted by Zoom.

Once you book an interview you will be provided with further information and links to access your interview via Zoom.

There is no option offered for conducting interviews by telephone or Skype, and any requests will be declined. It is your responsibility to ensure that you are available during the nominated times, as interviews will not be conducted outside of these dates.

Requests for an interview outside of the nominated dates and times that are available in the booking system will be declined.

*Failure to provide correct address details in your SATAC application does not constitute grounds for appeal.

Can interviews be rescheduled once the booking system has closed?

Once the booking system has closed, an interview cannot be rescheduled.

An interview will not be rescheduled for reasons such as (but not limited to): you did not check your eligibility or book an interview within the timeframe, conflicting interviews times with other universities. All interview bookings are scheduled in Australian Central Daylight Time.

It is important that applicants are aware of any time differences from their location to the time zone shown in the booking confirmation [e.g. 12pm ACDT (Adelaide) = 12:30pm AEDT (Sydney, Melbourne)].

Arriving late due to time zone miscalculation or other reasons is not grounds for reschedule or appeal.

If you arrive late for your interview, your application will not progress further.

A request to reschedule under medical or compassionate circumstances can be made via email to the Faculty of Health and Medical Sciences (with supporting documentation) for consideration within 24 hours of the original interview. Please submit your request to uoaapplications@adelaide.edu.au. No requests on behalf of an applicant will be considered.

In the event if a reschedule is approved, we will reschedule applicants into any available timeslot within the scheduled interview period only. No further reschedule will be approved once an interview has been rescheduled.

Interview criteria

The interview comprises of a series of scenarios and questions and provides an opportunity for you to demonstrate your personal qualities, including:

- motivation and self-awareness
- critical thinking and problem solving
- attention to detail and professional behaviour
- interpersonal and communication skills
- integrity and conscientiousness
- aptitude for group learning and teamwork
- compatibility and understanding of the degree and applicable health profession.

Preparing for the interview

When booking your interview, you will receive information about the interview process.

This will include your obligations, such as ensuring that you are in a private location, ensuring that you do not talk, listen to or otherwise communicate with

another person during the course of the interviews, and ensuring that you do not take or access any form of notes (physical or electronic) during the course of the interviews.

If you breach any of the interview conditions, your interview may be cancelled, in which case you will be ineligible for ranking in consideration of offers.

You are encouraged to prepare for the interview, but are discouraged from reciting rehearsed responses. Attempts at rehearsing for the interview often trigger 'rehearsed' replies rather than 'natural' responses, which can lessen your overall performance. The interviews are reviewed after each cycle and the content and conduct of interviews may change from one year to the next.

The University of Adelaide does not endorse any commercially available UCAT or interview preparation courses.

Interview structure

Interviews for the Adelaide medical program comprise of a Multiple Mini Interview format with a minimum of six stations of 10 minutes each. In each session you will be interviewed by one interviewer. Interviewers have completed a University of Adelaide training program and they are sourced from the following:

- employees of the University of Adelaide
- academic titleholders of the University of Adelaide
- alumni from the medical program
- health professionals
- people drawn from the wider community.

Step 8. Offers

Ranking for offers is based on a combination of scores from these three components:

- UCAT ANZ results (20%)
- interview results (40%)
- academic score results (40%)

Feedback on your performance and overall ranking will not be released by the University. Information regarding applicants and their applications is confidential and will not be released to an advocate of the applicant, whether family or friends. No appeals on behalf of an applicant will be considered.

Offers to successful domestic applicants will be made by SATAC. SATAC has a number of offer rounds in addition to the main round. The University of Adelaide reserves the right to make offers outside of the formal advertised SATAC offer rounds. Offers will continue to be released until all places are filled and this can continue up until week four of semester.

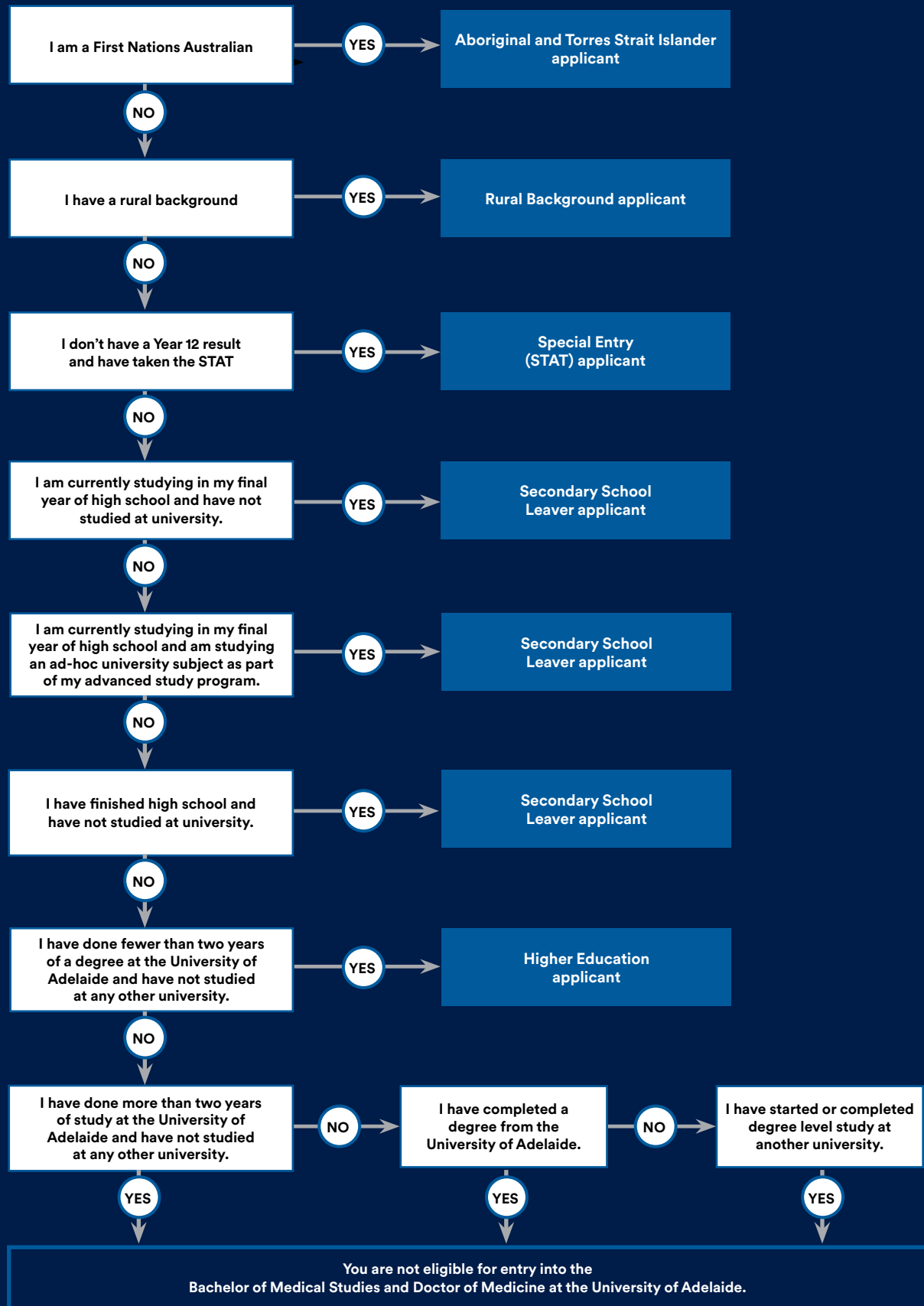
To secure your place in the Adelaide medical program, you must enrol in all first year courses by the deadline stated in your SATAC offer letter. Information regarding enrolment will be provided once SATAC offers are made.

Applying for credit

Due to the highly integrated curriculum in the Adelaide medical program, you are not eligible to apply for entry into the later years of the degree, or to apply for credit or recognition for prior learning. All students must begin the Adelaide medical program in Year 1.



Eligibility for entry pathways



Which entry pathway is right for you?

Aboriginal and Torres Strait Islander applicants

The Faculty of Health and Medical Sciences is committed to contributing to the University's desire to increase the number of Aboriginal and Torres Strait Islander people who participate in its programs, and makes particular effort to encourage First Nations students to participate in medical education.

The Adelaide medical program has allocated a minimum of four places just for Aboriginal and Torres Strait Islander applicants. All Aboriginal and Torres Strait Islander Pathway applicants will be eligible to attend an interview.

For Indigenous students unfamiliar with medical careers, you can contact Wirltu Yarlū and ask to have an Indigenous alumni for the medical school email you to arrange a time to yarn about their career experiences.

Aboriginal and Torres Strait Islander application process

1. Submit a South Australian Tertiary Admission Centre (SATAC) application online.
2. Submit the [Aboriginal and Torres Strait Islander Pathway Declaration Form](#) which will be made available once SATAC applications open.

Upload the form as part of your SATAC application within five working days of submitting your SATAC application.

3. Attend a panel interview by Zoom.

As with the mainstream pathway, if you are eligible for an interview, you will receive an email invitation to book an interview from a selection of times within the defined interview period on a first come, first served basis. Whilst the booking system is open you can cancel and reschedule your interview.

Please ensure you enter correct details (ie. correct SATAC ID, date of birth etc) when booking your interview.

You should receive a confirmation email from the booking system shortly after booking an interview.

All eligible candidates in this pathway will be interviewed. Interviews will be conducted by a panel of three to four people including academics, clinicians and alumni. The majority of the interview panel will identify as Aboriginal and/or Torres Strait Islander.

Immediately prior to the formal interview, members of the interview panel will have a yarn with you, to help put you at ease.

Interview criteria

The interview comprises a number of scenarios and questions and provides an opportunity for you to demonstrate your personal qualities, including the same qualities we look for in the mainstream interviews.

Wirltu Yarlū Education Access pathway

Wirltu Yarlū Aboriginal Education administers the Aboriginal Access Scheme which offers Aboriginal and Torres Strait Islander Australians an alternative entry pathway to study at the University of Adelaide.

For more information visit: adelaide.edu.au/wirltu-yarlū



Higher Education applicants

There are places in the Adelaide medical program reserved for students who come through the Higher Education Pathway. A minimum of 10 places from the Higher Education quota will be allocated to applicants from the Bachelor of Health and Medical Sciences and Bachelor of Health and Medical Sciences (Advanced).

Higher Education eligibility

To be considered for the Higher Education entry pathway, your only tertiary record of study must be from the University of Adelaide. You cannot have a tertiary record from any other Australian or overseas university. This does not include accelerated study in Year 12, such as the HeadStart Program or Foundation Studies Program.

Higher Education applicants are required to sit the UCAT ANZ test and gain a competitive score to be invited to an interview. The University will use your Grade Point Average for your Academic Score.

To meet the minimum academic threshold as a Higher Education applicant:

- First year students must have between 18 and 24 units of level one study and have achieved at least a credit average (Grade Point Average [GPA] of 5.0 or more) across all subjects.
- Second year students must have between 24 and 48 units of Level 1 and 2 study and have achieved at least a credit average (GPA of 5.0 or more) across all subjects.
- Third year students (having studied one or more level three subjects or with more than 48 units of study) are not eligible for entry into the Adelaide medical program and should consider graduate medicine pathways.

You must also meet the prerequisite subject requirements.

If you want to be considered for the Higher Education Pathway, you will need to enter your University of Adelaide Student ID number as part of your SATAC application. Failure to add your University of Adelaide Student ID number within your application is not grounds for appeal.

Rural Background applicants

We are committed to improving health care in rural and remote communities by increasing the number of doctors working in these regions. A minimum of 41 places in the Adelaide medical program are reserved for students who come from a rural background.

We are anticipating some slight changes to the rural entry pathway for 2025, please check back in this guide for further information once SATAC applications open in August.

If you want to be considered for the Rural Background entry pathway, you will need to complete a Rural Entry Pathway Statutory Declaration within five days of lodging your SATAC application.

The form is available via: satac.edu.au/supplying-documents-to-satac. Please upload the form as part of your SATAC application.

Please note: *Your Rural Background status may be audited by the University and false declarations may result in your place in the program being revoked.*

Secondary School Leaver applicants

To be considered as a Secondary School Leaver applicant, you are not permitted to have a tertiary academic record of study from a university. In other words, you must never have enrolled in a bachelor degree or higher level program at an Australian or overseas university. This does not include accelerated study in Year 12, such as the HeadStart program or Foundation Studies programs.

For full details of Tertiary Entrance Rules under the SACE/NTCET refer to the 'Tertiary Entrance Booklet 2024, 2025, 2026 (SACE/NTCET)' published by SATAC (available at satac.edu.au).

Special Entry (STAT) applicant

STAT applicants are required to sit the UCAT ANZ test and gain a competitive score to be invited to an interview. We use your STAT result for your Academic Score.

To check your eligibility to use the STAT, see Degree Finder - adelaide.edu.au/degree-finder/bms_bmedstud.html

To meet the minimum academic threshold as a STAT applicant, you must achieve a STAT score in the top decile. You must also meet the prerequisite subject requirements.

For more details on the STAT, see satac.edu.au/stat



Domestic entry key dates

Date	Activity
Tuesday 5 March 2024	UCAT ANZ registration opens
Friday 17 May 2024	UCAT ANZ registration closes
Friday 31 May 2024	UCAT ANZ late booking deadline (late fees apply)
Wednesday 5 June 2024	UCAT ANZ FINAL late booking deadline (late fees apply)
Monday 1 July to Friday 9 August 2024*	Sit the UCAT ANZ
Monday 5 August 2024	SATAC applications open
Monday 30 September 2024	SATAC applications close for the Bachelor of Medical Studies and Doctor of Medicine
Thursday 24 October 2024	Interview eligibility outcome available
Late November to 2024	Interviews held
SATAC will release offers from January 2025 into Medical Studies. For the set dates please visit satac.edu.au/undergraduate	

*dates are correct at time of publishing. Please check the UCAT ANZ website for updates ucat.edu.au/about-ucat/ucat-anz-test-cycle

For key university dates, please visit: adelaide.edu.au/student/dates/critical

Domestic contacts



Who to contact with any questions

The Future Students team's friendly and skilled staff can address all degree enquiries over the phone or online. If they do not have the answer, enquirers will be referred to faculty/school/discipline staff for expert advice.

Future Students team

T: (08) 8313 7335

Free-call (outer Adelaide, SA and interstate only):
1800 061 459

Enquire online:
future.ask.adelaide.edu.au

SATAC

W: satac.edu.au

T: (08) 8224 4000

T: 1300 138 440 (local call cost)

UCAT ANZ

ucat.edu.au/ucat-anz/

Faculty of Health and Medical Sciences

E: askhealthsc@adelaide.edu.au

Alternative study

As entry into the Bachelor of Medical Studies and Doctor of Medicine is highly competitive, applicants who are strongly motivated towards a career in the health field may also wish to consider applying for other health related undergraduate degrees offered by the University of Adelaide.

Bachelor of Health and Medical Sciences

The Bachelor of Health and Medical Sciences is a diverse and flexible degree that prepares students to tackle the major health issues facing the world today. With a unique selection of courses that draw from all the health sciences disciplines, the degree is ideal for students who are fascinated by the human body and who wish to develop a broad range of relevant, transferable and highly sought-after skills suited to a variety of careers in health.

Developed in consultation with industry partners, this innovative degree offers flexible online and part-time study options.

A year-long research placement provides practical hands-on experience, and overseas study opportunities are available to increase understanding of global health issues.

Students of the Bachelor of Health and Medical Sciences and the Bachelor of Health and Medical Sciences (Advanced) have the flexibility to select one of six different majors spread across two different streams: Medical Health and Lifespan Health.

Medical Health majors:

- Clinical Trials
- Medical Sciences
- Neurosciences

Lifespan Health majors:

- Nutritional Health
- Public Health
- Reproductive and Childhood Health.

Bachelor of Health and Medical Sciences (Advanced)

For students who want to lead the way on health issues, the Bachelor of Health and Medical Sciences (Advanced) is an innovative degree with a global health focus that prepares them to improve the health of individuals and populations.

With an emphasis on innovation, entrepreneurship, and hands-on clinical and research skills, the degree offers a strong foundation in a wide range of health related areas and provides graduates with the knowledge and leadership skills suited to a variety of health related careers.

Students are taught by award-winning academics to develop clinical skills with a medical focus. A unique course in Hacking Health offers the chance to explore solutions to frontline health care problems.

With a choice of six majors, as well as flexible online and part-time learning options, students can shape their studies to match their interests, career aspirations and lifestyle.

A year-long research placement provides the opportunity to gain practical experience and build professional networks, and overseas study is available to help students gain a global perspective of health issues.



I was fascinated by health and the human body, but unsure of which field or occupation to pursue. Studying this degree has been an enriching and exciting experience and has provided me opportunity to explore different areas within health.”

Maddison Sims

Bachelor of Health and Medical Sciences (Advanced)

Kaurna acknowledgement

We acknowledge and pay our respects to the Kaurna people, the original custodians of the Adelaide Plains and the land on which the University of Adelaide's campuses at North Terrace, Waite, and Roseworthy are built. We acknowledge the deep feelings of attachment and relationship of the Kaurna people to country and we respect and value their past, present and ongoing connection to the land and cultural beliefs. The University continues to develop respectful and reciprocal relationships with all Indigenous peoples in Australia, and with other Indigenous peoples throughout the world.

Further enquiries

The University of Adelaide SA 5005 Australia

enquiries future.ask.adelaide.edu.au

phone +61 8 8313 7335

free-call 1800 061 459

web adelaide.edu.au

facebook facebook.com/uniofadelaid

twitter twitter.com/uniofadelaid

snapchat snapchat.com/add/uniofadelaid

instagram instagram.com/uniofadelaid

wechat UniversityOfAdelaide

weibo weibo.com/uniadelaide

Disclaimer The information in this publication is current as at the date of printing and is subject to change. You can find updated information on our website at adelaide.edu.au. The University of Adelaide assumes no responsibility for the accuracy of information provided by third parties.

© The University of Adelaide
February 2024. Job no. UA30464-IL
CRICOS 00123M