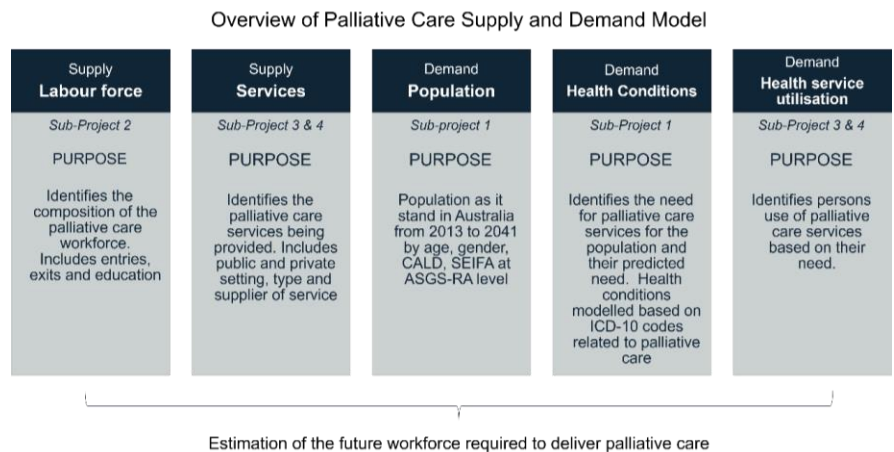


THE HOSPITAL RESEARCH FOUNDATION STATEWIDE COLLABORATIVE PALLIATIVE CARE PROGRAM

WORKFORCE SUB-PROJECT 3: MODELS OF PALLIATIVE CARE FOR UNDER-SERVED POPULATIONS IN HIGH INCOME COUNTRIES: A SCOPING REVIEW

Overview: This sub-project is part of the Workforce project that aims to develop a workforce model to estimate the health workforce required to support the delivery of palliative care that meets the needs of South Australians, including CALD and rural and remote populations. The overall model and parts of the model that align with the sub-projects are shown in the figure displayed; the scoping review will identify models of palliative for the under-served populations of interest.



Aim: To describe models of palliative care for under-served populations (adults of culturally and linguistically diverse communities; low socioeconomic status; and/or residing in rural areas) in high-income countries.

Where: This project will be completed by researchers from Western Sydney University, The University of Adelaide, and the University of South Australia.

When: The scoping review will be undertaken in three parts (one per population) commencing in October 2023.

Who: This scoping review will consider articles that focus on models of palliative care for nominated under-served populations, irrespective of sex, age, or primary diagnosis.

How: MEDLINE (Ovid), Embase (Ovid), PsycINFO (Ovid), Emcare (Ovid), CINAHL (EBSCO), and Scopus will be searched for articles, irrespective of language, published from 2014. Two independent reviewers will screen titles and abstracts, followed by a full-text review of potentially relevant articles. Discrepancies will be reconciled with another reviewer. Two independent reviewers will extract data from included articles using a data extraction tool developed for this review. Results will be tabulated and/or presented diagrammatically, as well as summarized to explicitly address the objective of the review.

Outcomes: The reviews will be submitted for publication with findings informing other components of the overall project. The scoping review protocol is published in *JBI Evidence Synthesis* available at:

https://journals.lww.com/jbisrir/fulltext/9900/models_of_palliative_care_for_under_served.208.aspx

How can I find out more information? Contact the below Investigators.

Lead Investigator

Associate Professor Ann Dadich
 School of Business
 Western Sydney University
 Phone: (02) 9685 947

Chief Investigator

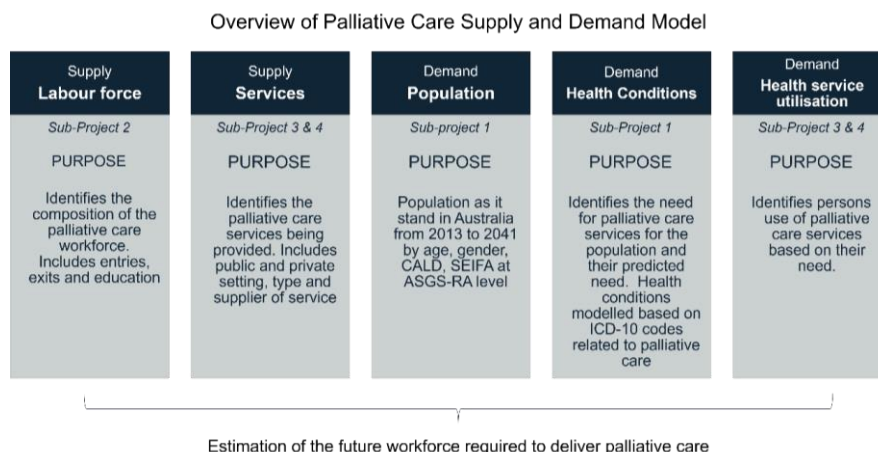
Professor Caroline Laurence
 School of Public Health
 The University of Adelaide
 Caroline.laurence@adelaide.edu.au
 Phone: (08) 8313 4951



THE HOSPITAL RESEARCH FOUNDATION STATEWIDE COLLABORATIVE PALLIATIVE CARE PROGRAM

WORKFORCE SUB-PROJECT 1: ESTIMATING THE NEED FOR PALLIATIVE CARE SERVICES IN AUSTRALIA AND SOUTH AUSTRALIA

Overview: This sub-project is part of the Workforce project that aims to develop a workforce model to estimate the health workforce required to support the delivery of palliative care that meets the needs of South Australians, including CALD and rural and remote populations. The overall model and parts of the model that align with the sub-projects are shown in the figure displayed.



Aim: To estimate the future population-based need for palliative care services in Australia.

Where: This project will be completed by researchers from The University of Adelaide and Western Sydney University.

When: The preliminary analysis was undertaken in 2022-23 as part of a Master of Public Health Dissertation.

Who: Australians who died between 2011 and 2020 by age, gender, and geographic location

How: Using secondary data, the study will estimate the current population palliative care need (or prevalence rates) in Australia, South Australia, and rural areas in 2020, as well as the estimated future need up to 2040. The preliminary study used three methods to estimate need as described by Etkind et al. (doi: 10.1186/s12916-017-0860-2) and Finucane et al. (doi: 10.1136/bmjopen-2020-041317).

Preliminary Findings:

- Estimated 60% increase in people who may need palliative care between 2021-2040
- Increasing rates of cancer and dementia are the conditions driving this increased
- Largest increase in need for palliative care will be in 75+ age groups, and in metropolitan and inner regional areas

Next steps

- Preliminary data presented as ePoster presentation OPCC 2023 conference
- Submission of a journal article

How can I find out more information? Contact the below Investigators.

Lead Investigator

Prof. Caroline Laurence
School of Public Health
The University of Adelaide
Caroline.laurence@adelaide.edu.au
Phone: (08) 8313 4951

Chief Investigator

A/Prof. Ann Dadich
School of Business
Western Sydney University
A.Dadich@westernsydney.edu.au

MPH Dissertation Student

Isaiah Luc
School of Public Health
The University of Adelaide
Isaiah.luc@adelaide.edu.au

