

BHlthSc – level III Courses 2012

A guide for students who will
be graduating at the end of
2012



Bachelor of Health Sciences
Human Health and Healthy Communities



A Guide for Planning your Degree
How to keep your options open to meet your career aspirations

BHlthSc Qualification Requirements

- passes in courses to the value of 72 units - i.e. 24 units each level, INCLUDING:

level I

- passes in four compulsory, level I courses (12 units)

level II

- passes in two compulsory level II courses (6 units)
- passes in at least two additional, level II Health Sciences courses

level III

- passes in level III courses to at least the value of 24 units
- passes in level III Health Sciences courses to a minimum of 12 units
- completion of a major in an area of study in either Faculty of Health Sciences or School of Molecular and Biomedical Sciences.
- A major is defined as a pass level or above of at least 9 units of level III courses from either a single discipline or from a recognised interdisciplinary stream.

NB: Non compulsory courses at level I and II may be substituted with level II and level III courses.

BHlthSc qualification requirements available at:

http://www.adelaide.edu.au/degree-finder/2012/bhlth_bhealthsc.html

BHlthSc Majors in Faculty of Health Sciences



BHlthSc Majors

Anatomical Sciences
Pathology
Pharmacology
Physiology
Psychology
Public Health
Neuroscience
Human Reproductive Health
Nutrition (New, 2012)

Additional level III Courses

Exercise Science (New, 2012)
Evolutionary Medicine (New, 2012)

Selection of level III courses and major(s) are based on the BHlthSc qualification requirements, personal interest, career aspirations and courses studied at level II.

Anatomical Sciences Courses

ALL COURSES ARE 3 UNITS

Semester 1

ANAT SC 3102 [Comparative Reproductive Biology of Mammals III](#)

Assumed knowledge: ANAT SC 2109 Cells, Tissues and Development; or ANAT SC 2500 Functional Human Anatomy or equivalent

ANAT SC 3103 [Integrative and Comparative Neuroanatomy III](#)

Assumed knowledge: ANAT SC 2109 Cells, Tissues and Development; or ANAT SC 2500 Functional Human Anatomy or equivalent

ANAT SC 3500 [Ethics, Science and Society](#)

Ethics, Science and Society is timetabled to fit in with level II courses.
Prerequisite: level I courses to a value of 12 units.

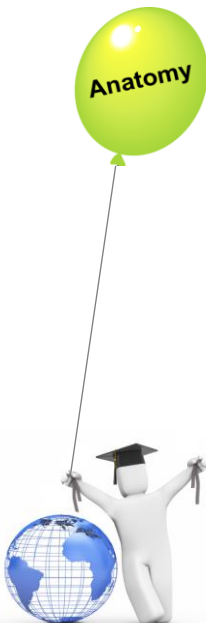
Semester 2

ANAT SC 3101 [Anthropological and Forensic Anatomy III](#)

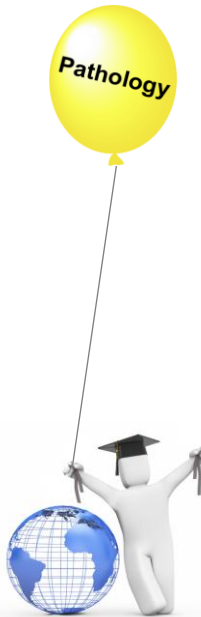
Assumed knowledge: ANAT SC 2200 Functional Human Anatomy or equivalent

ANAT SC 3104 [Structural Cell Biology III](#)

Assumed Knowledge: ANAT SC 2109 Cells, Tissues and Development; or ANAT SC 2200 Functional Human Anatomy or equivalent



Pathology Courses



Semester 1

PATHOL 3003 [General Pathology IIIHS](#) (6 units)

Prerequisites: PATHOL 2200 Biology of Disease and ANAT SC 2109 Cells, Tissues and Development, or ANAT SC 2500 Functional Human Anatomy or PHYSIOL 2510 Human Physiology IIA, or PHYSIOL 2520 Human Physiology IIB

Assumed Knowledge: basic anatomy, physiology, histology, microbiology and immunology and genetics

Semester 2

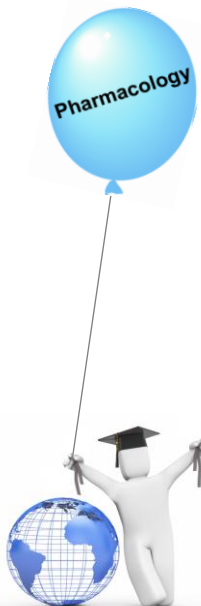
PATHOL 3100 [Topics in Forensic Sciences](#) (3 units),

Prerequisite : Pass in PATHOL 3003 General Pathology IIIHS

PATHOL 3200 [Neurological Diseases](#) (3 units)

Prerequisite : Pass in PATHOL 2200 Biology of Disease; non BHLthSc - pass in one or more of PHYSIOL 2510, ANAT SC 2109 or equivalent

Pharmacology Courses



Semester 1

PHARM 3010 [Pharmacology A III](#) (6 units)

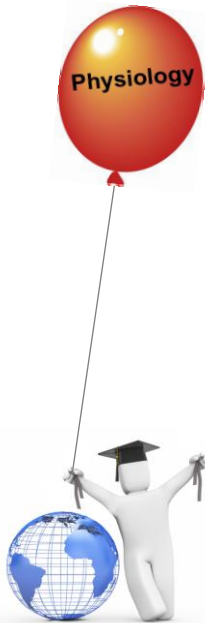
Prerequisite : At least 6 units in either of Level II Biochemistry, Chemistry or Physiology courses or a minimum of 3 units in Level II Pharmacology or Level II Pathology

Semester 2

PHARM 3011 [Pharmacology B III](#) (6 units)

Prerequisite : PHARM 3010 Pharmacology A III

Physiology Courses



Semester 1

PHYSIOL 3001 [Neurobiology III](#) (6 units)

Prerequisites : PHYSIOL 2510 Human Physiology IIA or PHYSIOL 2520 Human Physiology IIB

Semester 2

PHYSIOL 3000 [Advanced Systems Physiology III](#) (6 units)

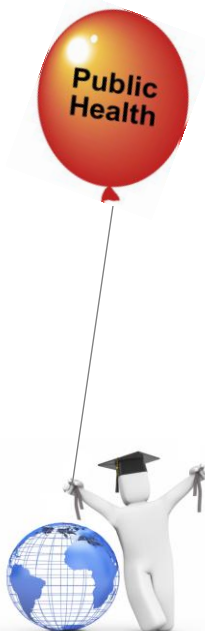
Prerequisites : PHYSIOL 2510 Human Physiology IIA or PHYSIOL 2520 Human Physiology IIB

PHYSIOL 3200 [Advanced Exercise Physiology](#) (3 units)

Prerequisite : PHYSIOL 2510 Human Physiology IIA

Assumed Knowledge: HLTH 3100 Exercise, Nutrition & Metabolism

Public Health Courses



Semester 1

PUB HLTH 3503 [Public Health Theory and Practice III](#) (3 units)

Prerequisites: PUB HLTH 2100 Public Health Science II & PUB HLTH 2200 Public Health Inquiry II.

PUB HLTH 3122 [International Health III](#) (3 units)

Prerequisite: none specified. (Intensive course run in mid-sem break)

Winter School

PUB HLTH 3500EX [Rural Public Health III](#) (3 units)

Prerequisite: Previous/concurrent study of public health, or social and economical development. Assumed Knowledge: Basic concepts and principles of Public Health, including: determinants of health, health differentials and basic research skills.

Semester 2

PUB HLTH 3501 [Epidemiology in Action III](#) (3 units)

Prerequisites: PUB HLTH 2100 Public Health Sci II & PUB HLTH 2200 Public Health Inquiry II.

PUB HLTH 3119 [Public Health Internship III](#) (6 units)

Prerequisites: - PUB HLTH 2100 Public Health Sciences II & PUB HLTH 2200 Public Health Inquiry II & at least 6 units Level III Public Health courses - Quota applies and it is based on academic performance.

Psychology Courses



Semester 1

PSYCHOL 3022 [Individual Differences, Personality & Assessment](#) (3 units)

PSYCHOL 3026 [Learning and Behaviour](#) (3 units)

PSYCHOL 3027 [Psychology, Science & Society](#) (3 units)

Semester 2

PSYCHOL 3020 [Doing Research in Psychology: Advanced](#) (3 units)

PSYCHOL 3021 [Health & Lifespan Development Psychology](#) (3 units)

PSYCHOL 3023 [Perception & Cognition](#) (3 units)

Prerequisites: For each level III course, the prerequisite is the completion of all four Level II Psychology courses.



Neuroscience Major



Semester 1

ANAT SC 3103 [Integrative and Comparative Neuroanatomy III](#) (3 units)

Assumed Knowledge: ANAT SC 2109 Cells, Tissues and Development; or ANAT SC 2200 Functional Human Anatomy or equivalent

PHYSIOL 3001 [Neurobiology III](#) (6 units)

Prerequisites: PHYSIOL 2510 Human Physiology IIA and PHYSIOL 2520 Human Physiology IIB

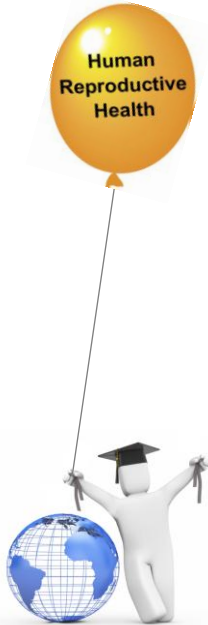
Semester 2

PATHOL 3200 [Neurological Diseases](#) (3 units)

Assumed Knowledge: Pass in PATHOL 2200 Biology of Disease



Reproductive Health Major



Semester 1

ANAT SC 3102 [Comparative Reproductive Biology of Mammals III](#) (3 units)

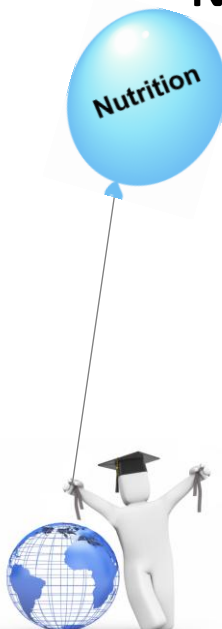
Assumed Knowledge: ANAT SC 2109 Cells, Tissues and Development; or ANAT SC 2200 Functional Human Anatomy or equivalent

Semester 2

OB&GYNAE 3000 [Human Reproductive Health III](#) (6 units)

Assumed Knowledge: ANAT SC 1102A/B Human Biology 1A/B and PATHOL 2200 Biology of Disease

Nutrition Major (new, 2012)



Semester 1

HLTH SC 3100 [Exercise, Nutrition & Metabolism](#) (3 units) (new, 2012)

Prerequisites: HLTH SC 2100 Fundamentals in Human Nutrition; PHYSIOL 2520 Human Physiology IIB

Semester 2

HTLH SC 3200 [Life Span Nutrition](#) (3 units) (new, 2012)

Prerequisite: HLTH SC 2100 Fundamentals in Human Nutrition
Assumed Knowledge: PHYSIOL 2520 Human Physiology IIB

FOOD SC 3502WT - [Nutrition III](#) (3 units) (new, 2012)

Assumed Knowledge: HLTH SC 2100 Fundamentals in Human Nutrition

Exercise Science Course (new, 2012)

Exercise
Science

Semester 2

PHYSIOL 3200 [Advanced Exercise Physiology](#) (3 units)

Prerequisite: PHYSIOL 2510 Human Physiology IIA

Assumed Knowledge: HLTH SC 3100 Exercise, Nutrition & Metabolism



Evolutionary Medicine (new, 2012)

Evolutionary
Medicine

Semester 2

HLTH SC 3500 [Evolution and Human Health](#) (3 units) Assumed Knowledge: 6 units of level I Biology, 6 units of level II Biomedical or Medical Sciences

Other courses that compliment HLTH SC 3500 Evolution and Human Health are:

level III ANAT SC 3101 [Anthropological and Forensic Anatomy III](#)
(3 units, sem 2)

Assumed knowledge: ANAT SC 3101 Functional Human Anatomy or equivalent.

level II PSYCHIAT 2200 - [Emotion Culture & Medicine II](#)
(3 units, sem 2)

Assumed Knowledge: PSYCHIAT 1001 - Person, Culture and Medicine I.

Appropriate Anthropological Course(s) of level III equivalent value



Biochemistry, Genetics, Micro/Immuno

Faculty
of
Sciences
Courses

For information on these courses and their prerequisites/
assumed knowledge, see:

<https://access.adelaide.edu.au/courses/search.asp?year=2012>



Need More Info?

?

More information on level III courses and their prerequisites/
assumed knowledge is available at:

<https://access.adelaide.edu.au/courses/search.asp?year=2012>

A list of Course Coordinators for level III Courses is available at:

<http://health.adelaide.edu.au/students/current/course%20coordinators.html>

Study Pathways for Majors in the Bachelor of Health Sciences are
available at:

http://health.adelaide.edu.au/school_medsci/bhs/plans/



Presentation compiled by Dr Julie Haynes, Dec, 2011
contact: julie.haynes@adelaide.edu.au