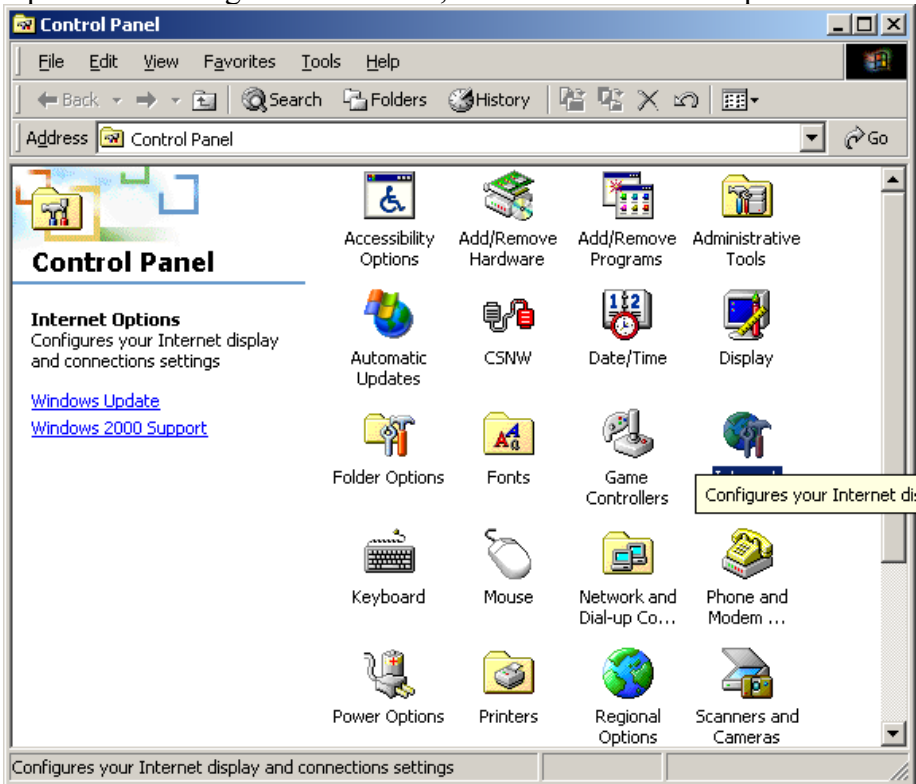
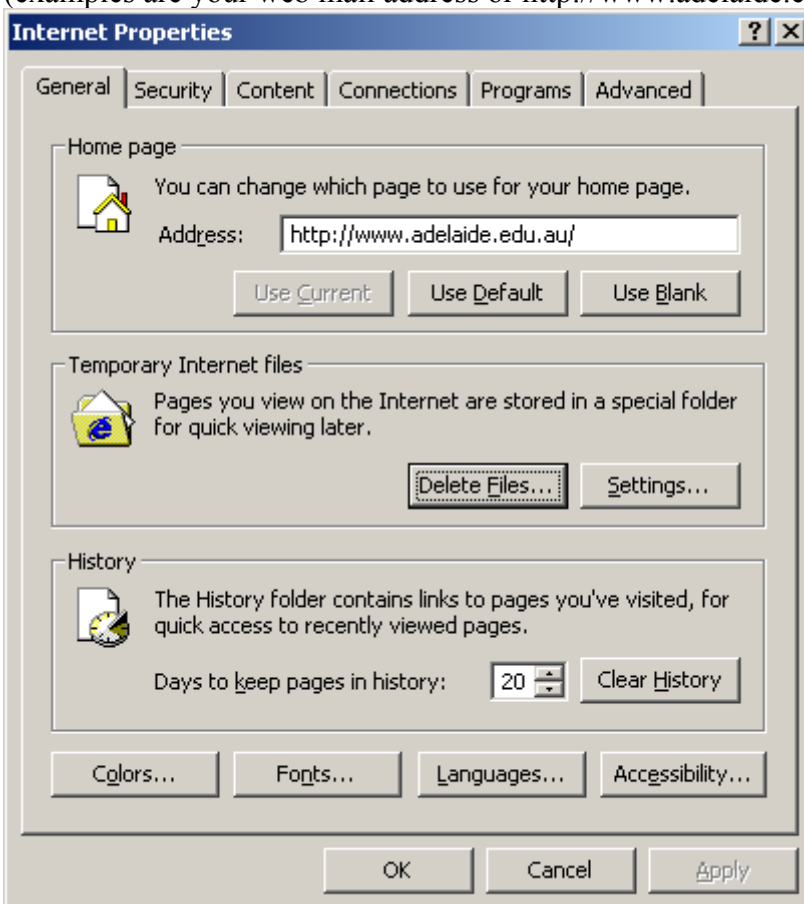


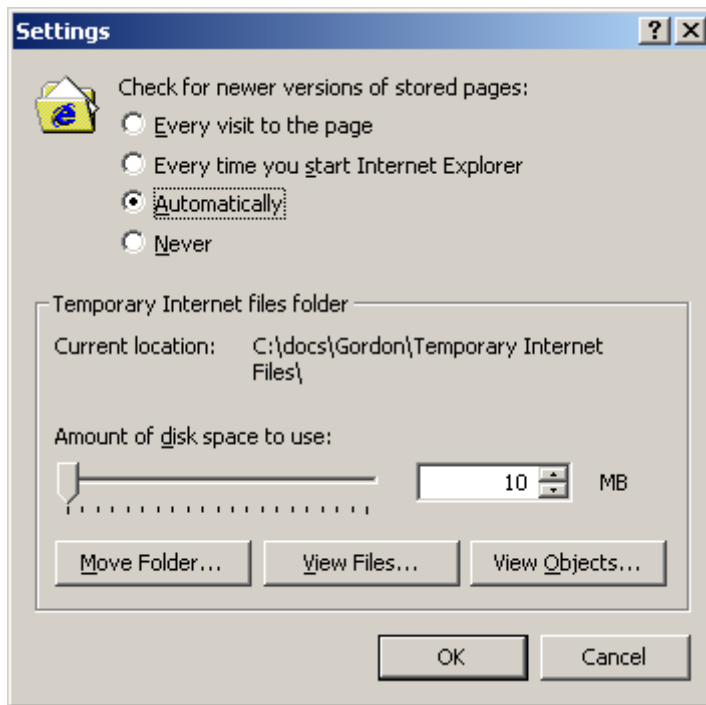
Open Start/Settings/Control Panel, double click Internet options



Fill in the home page address as below (you can use something else if you like) (examples are your web mail address or <http://www.adelaide.edu.au/health/pharm/>)



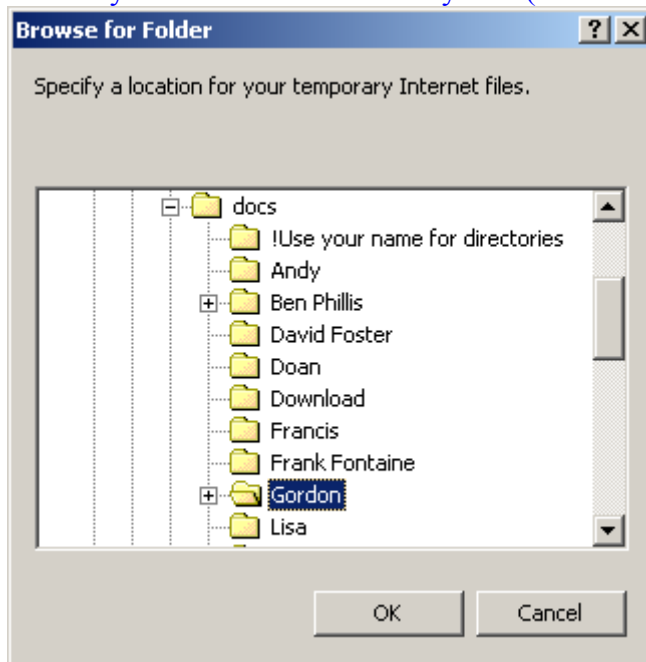
Click delete files if you have used IE on this computer before (clears cache), Click Settings



Change “Amount of disk space to use” to 10Mb (*this is mandatory on shared computers*)

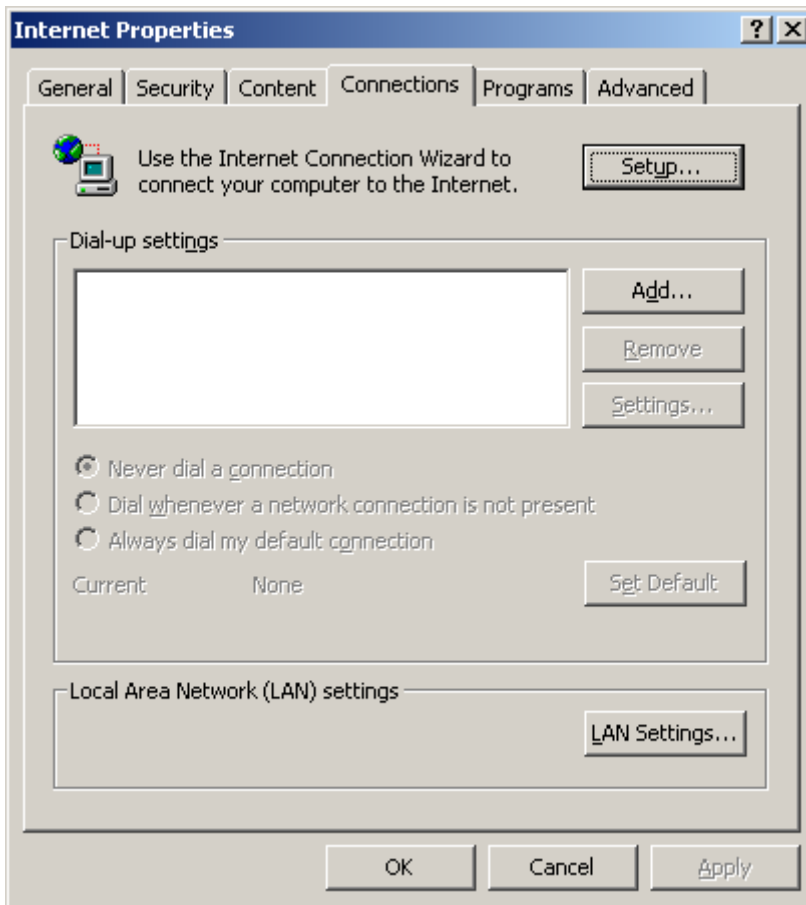
Click move folder & specify location (similar to above) ie D:\Docs\Gordon

You may have to create a directory first (find the Docs directory) as it could be on C: or D:

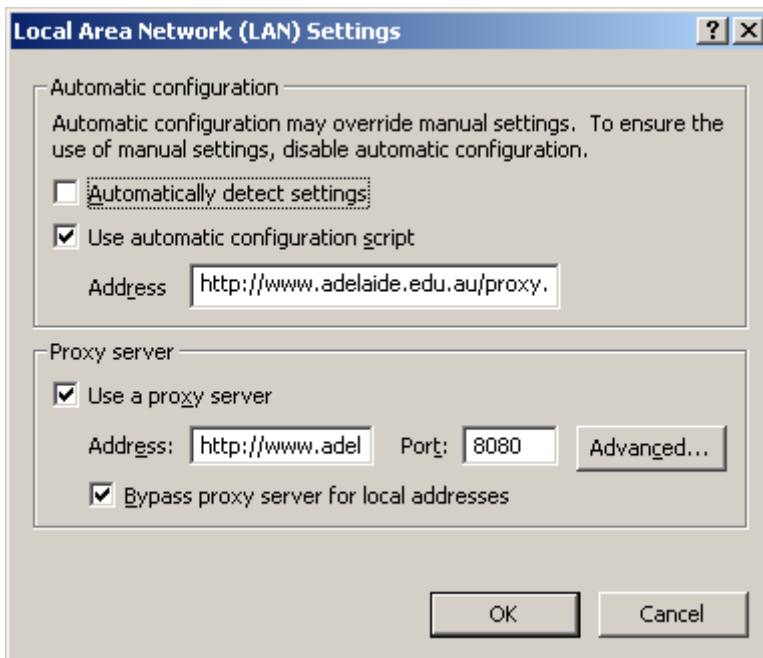


Click OK twice

Computer will log you out at this point but log back in again & start Control Panel/Internet Options again, click on “Connections” tab



Click on “LAN Settings”



Set up the dialogue box as per above (both the address boxes have the entry `http://www.adelaide.edu.au/proxy.pac` entered. Make sure check boxes are correct & port 8080 is entered. Click OK twice

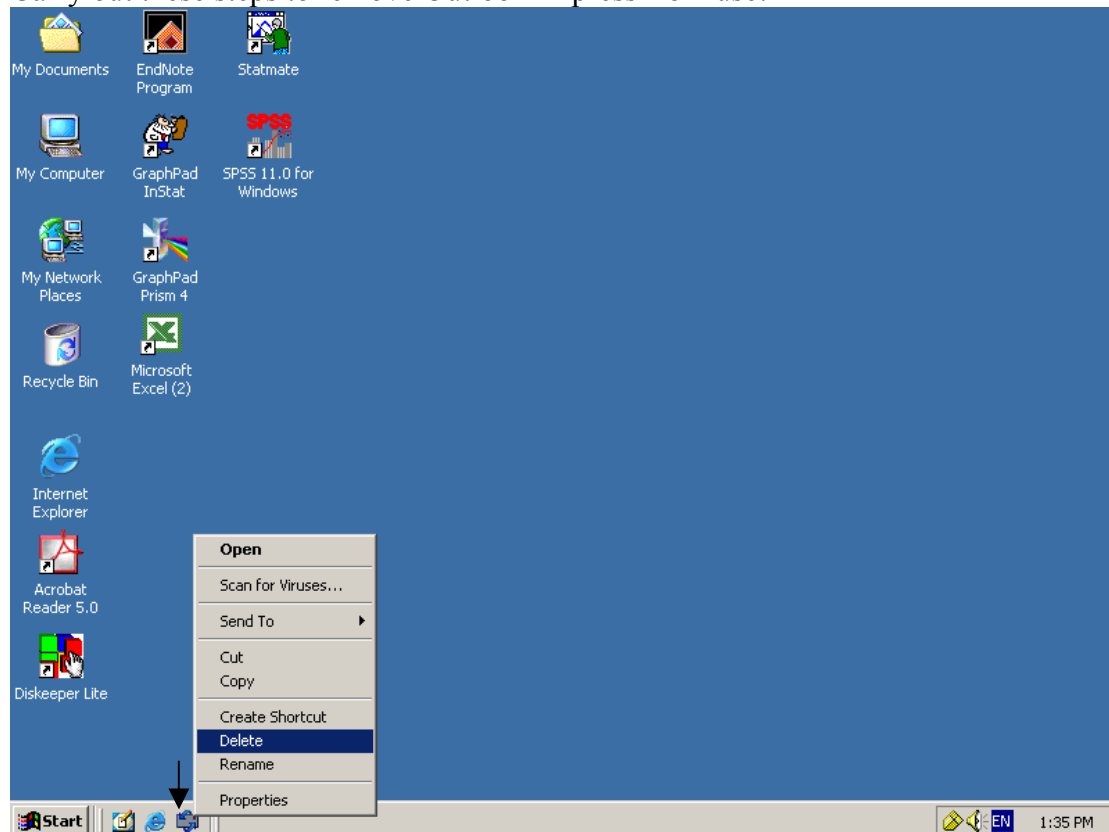


If & when you get this screen with Internet Explorer **DO NOT** attempt to update anything. That's it, Internet explorer settings are all complete?

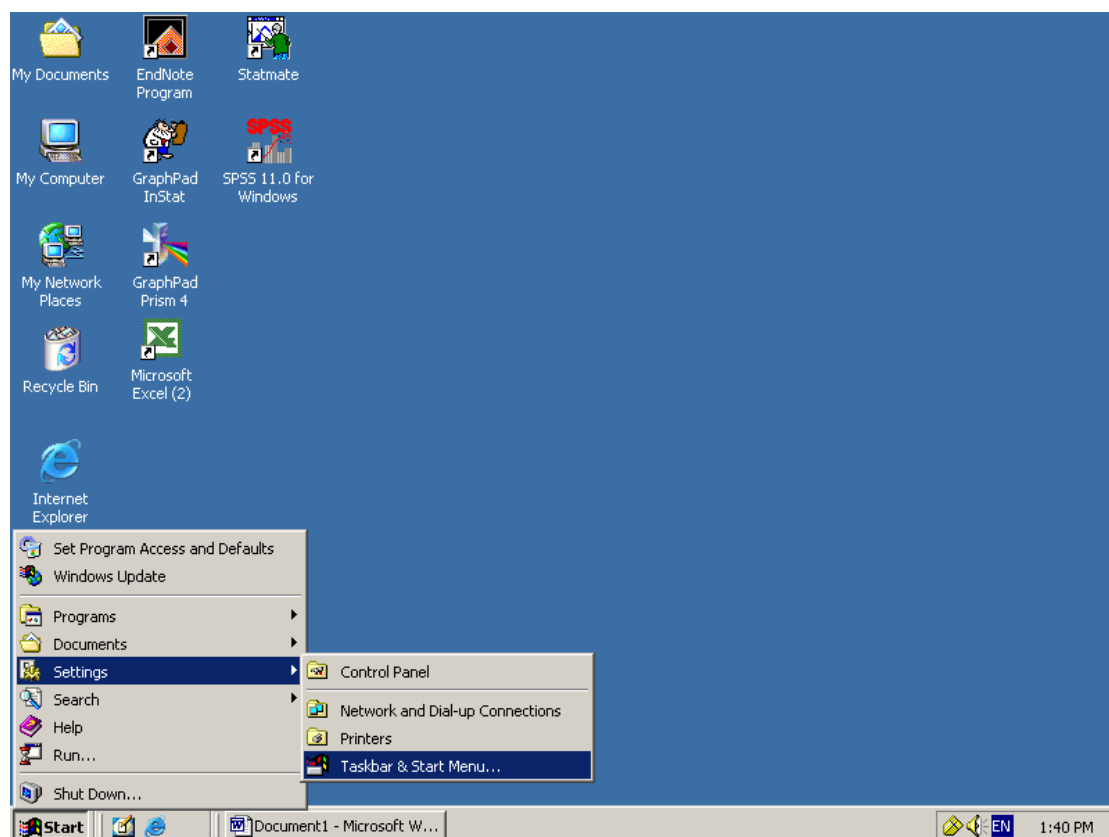
Follow the following instructions to remove Microsoft Outlook Express from use (program will still be on the computer but it will be hidden from user)

Microsoft Outlook Express is not to be used for your mail program (if you want to use a stand alone mail program Eudora can be installed for you.)

Carry out these steps to remove Outlook Express from use!

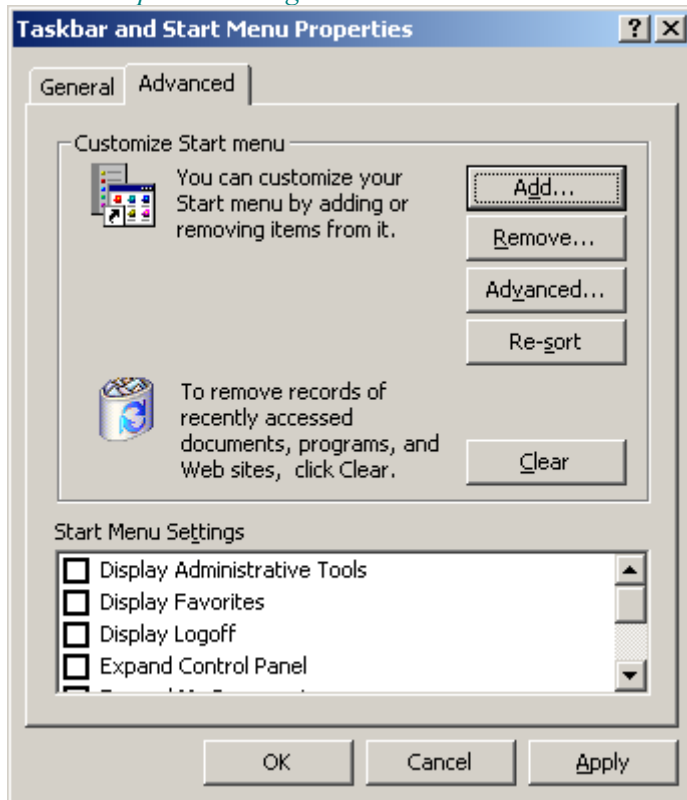


Right click the icon in the task bar & select delete, click OK



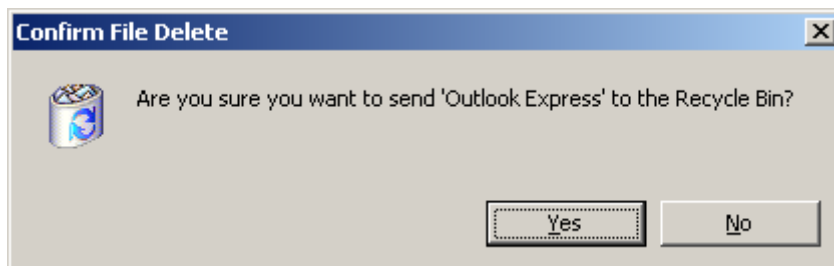
Click Start, Settings, Taskbar & Start menu

Internet Explorer Settings



Click Advanced tab & click Remove,

Select "Outlook Express" & click Remove button



Click "Yes" button to confirm delete. Click "Apply" button & Click OK

If there is an "Outlook" or "Outlook Express" icon on your desktop, delete it